

Cynomolgus ASGR1 Protein; His Tag

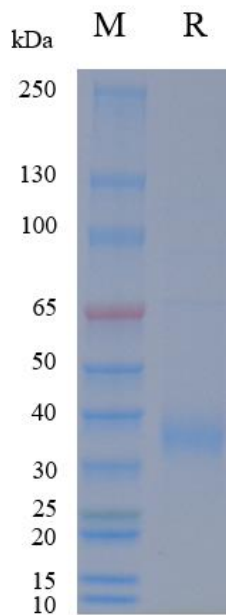
Product Information

Product Name	Cynomolgus ASGR1 Protein; His Tag
Storage temp	Store at $\leq -70^{\circ}\text{C}$, stable for 6 months after receipt. Recommend to aliquot the protein into smaller quantities for optimal storage. Please minimize freeze-thaw cycles.
Catalog# / Size	GM-88296RP-100 / 100 μg GM-88296RP-1000 / 1 mg

Protein Information

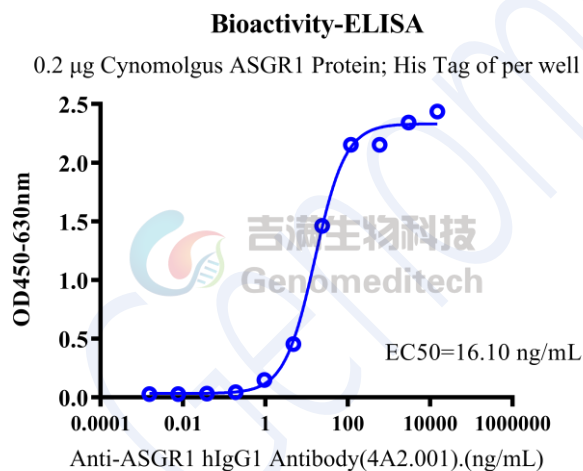
Alternative Names	ASGP-R 1, ASGPR 1, Hepatic lectin H1, HL-1
Source	Cynomolgus ASGR1 Protein; His Tag (GM-88296RP) is expressed from human 293 cells (HEK-293). It contains AA Ser 61 - Leu 291 (Accession # XP_005582755.1). This protein carries a His tag at the N-terminus.
Purity	> 90% as determined by SDS-PAGE
Endotoxin	< 1 EU/ μg , determined by LAL gel clotting assay
Predicted Mol Mass	27.3 KDa
Formulation	Supplied as a 0.2 μm filtered solution of PBS, pH7.2-7.4.
Description	ASGR1 is a hepatocyte-expressed transmembrane glycoprotein that forms part of the ASGPR complex. It binds desialylated glycoproteins with terminal galactose or GalNAc, mediating endocytosis and clearance to maintain hepatic protein turnover. Structurally, it has a short cytoplasmic tail, a single transmembrane domain, and an extracellular lectin-like domain, working with ASGR2 for high-affinity binding. ASGR1 mainly drives clathrin-mediated endocytosis, routing ligands to endosomes/lysosomes. Beyond clearance, it influences signaling related to hepatic metabolism, inflammation, and receptor recycling, potentially affecting ubiquitination and recycling pathways and intersecting lipid/carbohydrate metabolism in hepatocytes. Dysregulation may impact plasma protein clearance and liver disease, making ASGPR a target for hepatic delivery and therapy.

SDS-PAGE

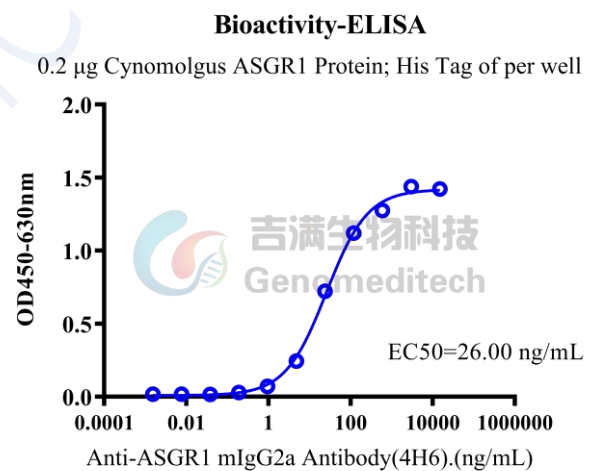


On SDS-PAGE under reducing (R) condition. The gel was stained overnight with Coomassie Blue. The purity of the protein is greater than 90%.

Bioactivity-ELISA



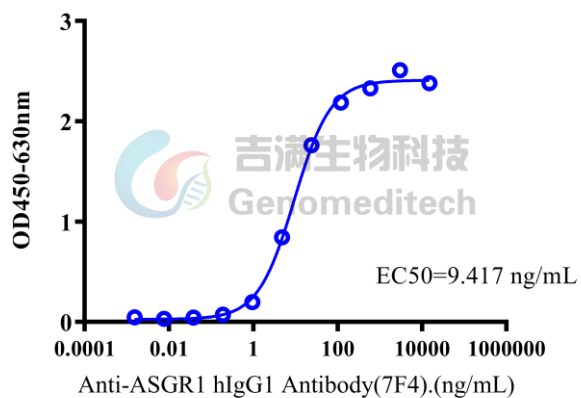
Cynomolgus ASGR1 Protein; His Tag (Catalog # GM-88296RP) was immobilized at 2 µg/ml (100 µL/well). Increasing concentrations of Anti-ASGR1 hIgG1 Antibody(4A2.001) (Catalog # GM-88205AB) were added.



Cynomolgus ASGR1 Protein; His Tag (Catalog # GM-88296RP) was immobilized at 2 µg/ml (100 µL/well). Increasing concentrations of Anti-ASGR1 mIgG2a Antibody(4H6) (Catalog # GM-88206AB) were added.

Bioactivity-ELISA

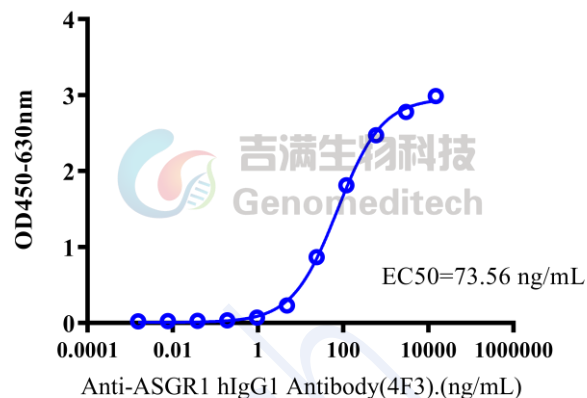
0.2 µg Cynomolgus ASGR1 Protein; His Tag of per well



Cynomolgus ASGR1 Protein; His Tag (Catalog # GM-88296RP) was immobilized at 2 µg/ml (100 µL/well).
Increasing concentrations of Anti-ASGR1 hIgG1 Antibody(7F4) (Catalog # GM-88207AB) were added.

Bioactivity-ELISA

0.2 µg Cynomolgus ASGR1 Protein; His Tag of per well



Cynomolgus ASGR1 Protein; His Tag (Catalog # GM-88296RP) was immobilized at 2 µg/ml (100 µL/well).
Increasing concentrations of Anti-ASGR1 hIgG1 Antibody(4F3) (Catalog # GM-88208AB) were added.